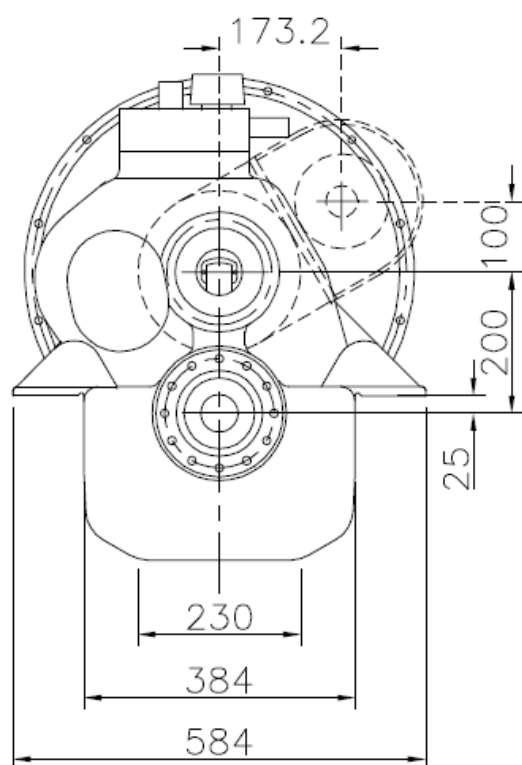
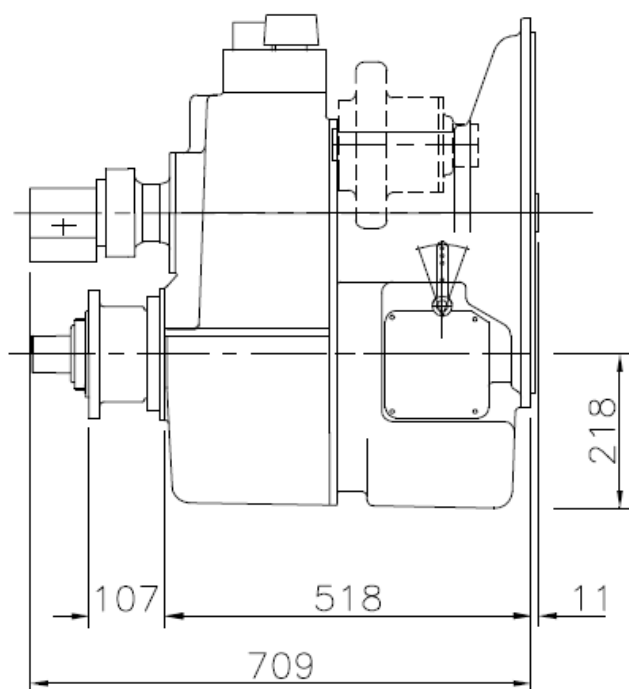


# 200HSC - MARINE GEARBOX



Assembly Type 200HSC

Reduction Ratio	PF kW/rpm	Input Shaft Diameter mm
2,13:1	0,260	57
2,55:1	0,226	57
2,94:1	0,224	57

## Servo for CP Propeller:

Max force = 75 kN

Max stroke = 70 mm

## PTO

PTO with SAE B-flange and 13 tooth  $\frac{7}{8}$ " involute inside spline

Max torque from PTO: 400 Nm

## Weight:

Approx. 275 kg

## Gearbox:

- Built-in servo system for CP propeller
- Compact design
- Option of 1 PTO with own hydraulic clutch
- Rigid cast iron housing
- Helical ground gearwheels in casehardened and highly alloyed steel
- Hydraulic multi-plate clutch
- Oil system with direct driven oil pump, cooler, filter, valves etc.
- Pressure lubricated spherical roller bearings
- Designed according to the rules of the classification societies
- Each gearbox is tested and approved in test bed

## Variants:

- 200HSC-IS with built-in intermediate shaft for counter rotating propeller
- 200HSC-U with U-drive
- 200HSC-U-IS with U-drive and intermediate shaft for counter rotating propeller