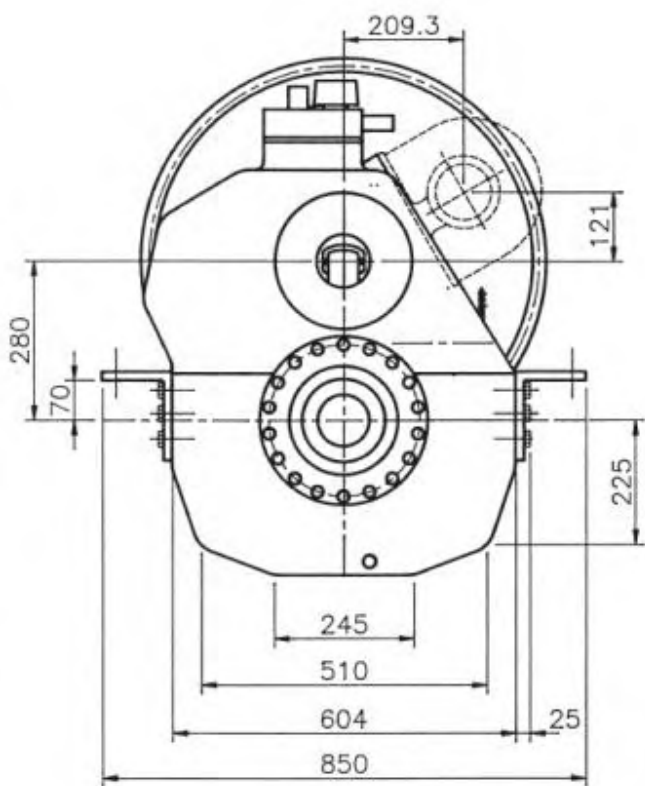
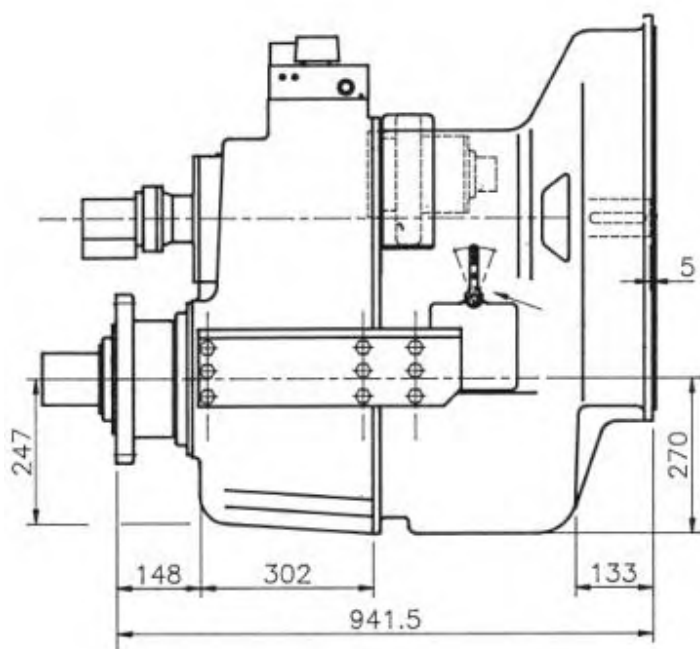


280HSC - MARINE GEARBOX



Assembly Type 280HSC

Reduction ratio	PW kW/rpm	Input shaft mm
1,75-2,06-2,55:1	0,610	80
3,06:1	0,570	80
3,47:1	0,474	80

Servo for CP Propeller:

Max force = 156 kN

Max stroke = 114 mm

PTO

PTO with SAE B-flange and 14 tooth 1 ¼" involute inside spline

Step-up 1:1,11

Max torque from PTO: 600 Nm

Weight:

Approx. 700 kg

Gearbox:

- Built-in servo system for CP propeller
- Compact design
- Option of 1 PTO with own hydraulic clutch
- Rigid cast iron housing
- Helical ground gearwheels in casehardened and highly alloyed steel
- Hydraulic multi-plate clutch
- Oil system with direct driven oil pump, cooler, filter, valves etc.
- Pressure lubricated spherical roller bearings
- Designed according to the rules of the classification societies
- Each gearbox is tested and approved in test bed

Variants:

- 280HSC-IS with built-in intermediate shaft for counter rotating propeller
- 280HSC-U with U-drive
- 280HSC-U-IS with U-drive and built-in intermediate shaft for counter rotating propeller