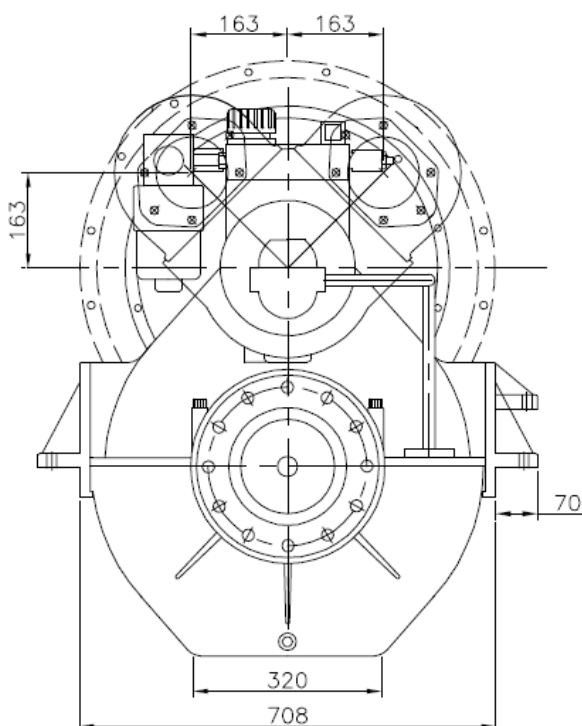
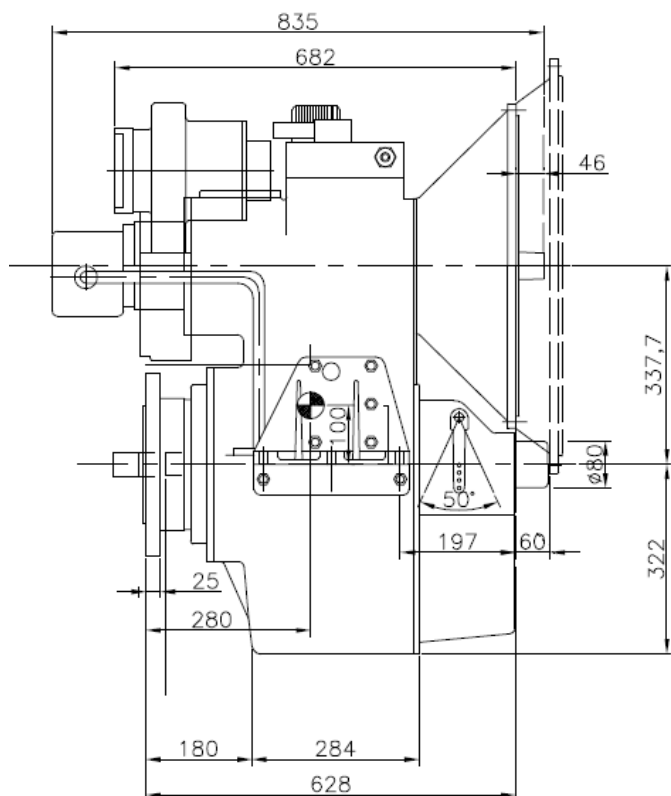


337HS - MARINE GEARBOX



Assembly Type 337HS

Reduction ratio	PF kW/rpm	Input shaft mm
2,48-3,00-3,54-4,14:1	0,278	50
4,55-5,11-5,47-5,94:1	0,220	50

Servo for CP Propeller:

Max force = 120 kN

Max stroke = 90 mm

PTO:

PTO with SAE C-flange and 14 tooth 1 1/4" involute inside spline

Other SAE and ISO flanges and splines available

Free shaft end also available

Max torque from PTO: 800 Nm

Weight:

Approx. 550 kg

Gearbox:

- Built-in servo system for CP propeller
- Compact design
- Large economical reduction ratio
- Option of 1 or 2 PTOs each with own hydraulic clutch
- Rigid cast iron housing
- Helical ground gearwheels in casehardened and highly alloyed steel
- Hydraulic multi-plate clutch
- Oil system with direct driven oil pump, cooler, filter, valves etc.
- Pressure lubricated spherical roller bearings
- Designed according to the rules of the classification societies
- Each gearbox is tested and approved in test bed

Variants:

337HS-IS with built-in intermediate shaft for counter rotating propeller