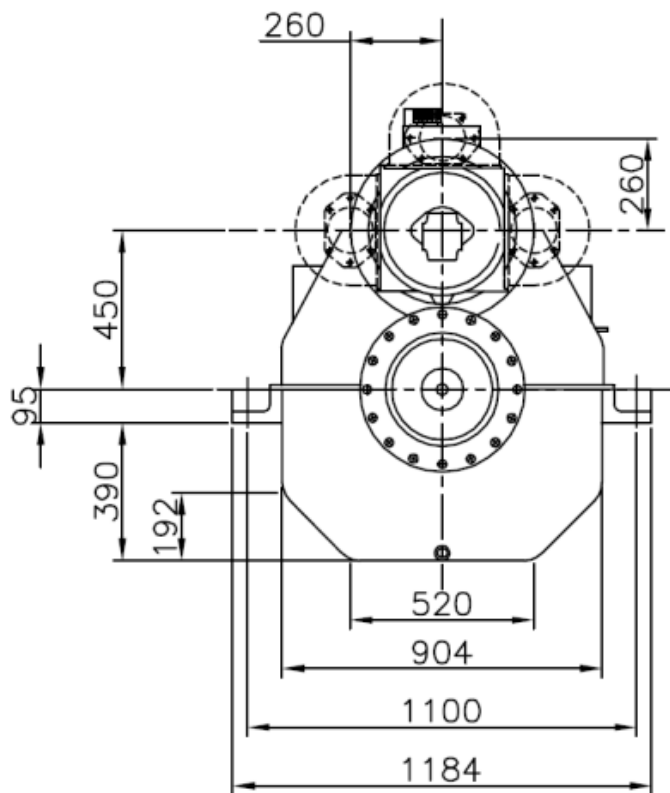
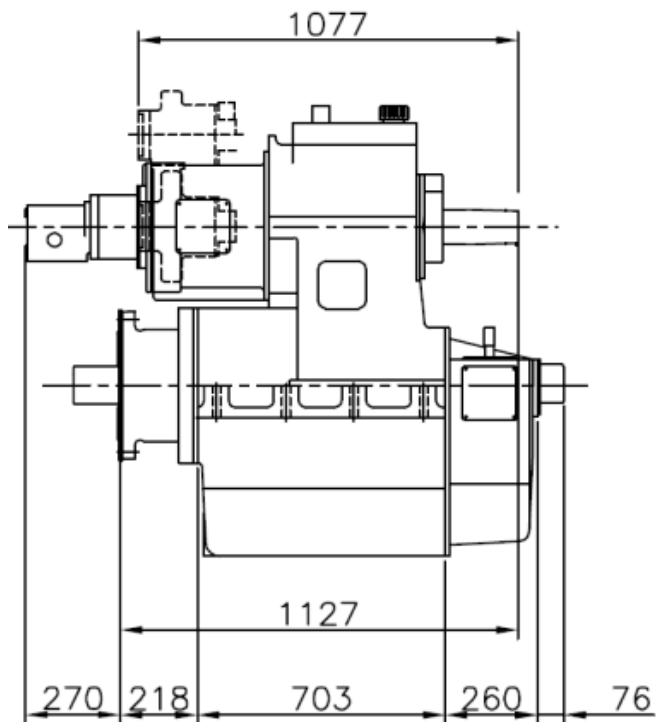


450HS - MARINE GEARBOX



Assembly Type 450HS

Reduction ratio	PF kW/rpm	Input shaft mm
3,11-3,58:1	0,690	80
4,18-4,44:1	0,690	80
5,11:1	0,613	80
5,47:1	0,540	70
5,94:1	0,540	70
6,47:1	0,530	70

Servo for CP Propeller:

Max force = 300 kN

Max stroke = 180 mm

PTO:

PTO with SAE C-flange and 14 tooth 1 1/4" involute inside spline

Other SAE and ISO flanges and splines available

Free shaft end also available

Max torque from PTO: 2000 Nm

Weight:

Approx. 2300 kg

Gearbox:

- Built-in servo system for CP propeller
- Compact design
- Large economical reduction ratio
- Option of 1, 2 or 3 PTOs each with own hydraulic clutch
- Rigid cast iron housing
- Helical ground gearwheels in casehardened and highly alloyed steel
- Hydraulic multi-plate clutch
- Oil system with direct driven oil pump, cooler, filter, valves etc.
- Pressure lubricated spherical roller bearings
- Designed according to the rules of the classification societies
- Each gearbox is tested and approved in test bed

Variants:

450OD prepared for OD system