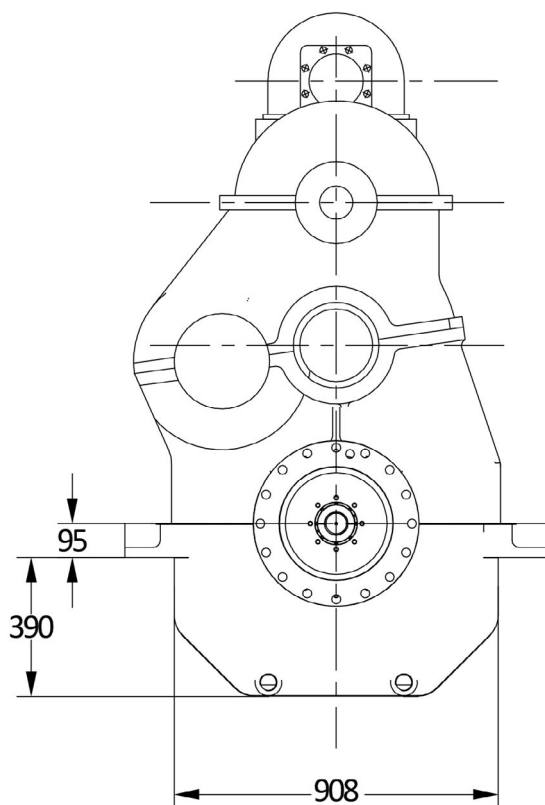
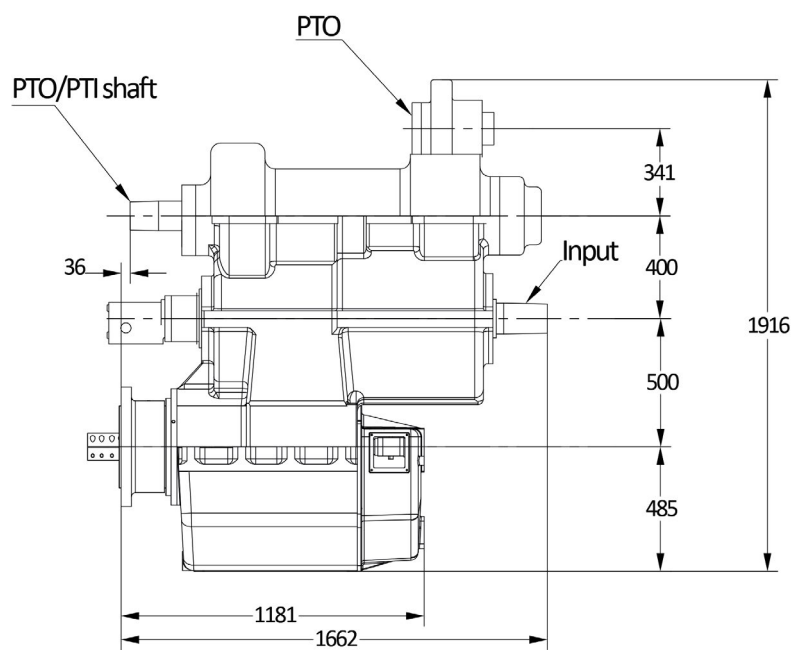


50HS/OD - MARINE GEARBOX



Assembly Type 50HS PTO/PTI

Reduction ratio	PW kW/rpm	Max. PTI PF kW/rpm*	Max. combined PW kW/rpm
2,03:1	2,400	0,52	2,92
2,56:1	2,400	0,52	2,92
3,04:1	2,400	0,52	2,72
3,63:1	2,32	0,52	2,32
4,56:1	1,433	0,52	1,433
4,94:1	1,345	0,52	1,345
6,06:1	0,95	0,52	0,95
6,56:1	0,810	0,52	0,81

Servo for CP Propeller:

Max force = 300 kN
Max stroke = 180 mm

PTO/PTI:

PTO/PTI with free shaft
PTO ratio 0,46:1-1,36:1
PTI ratio 0,74:1-2,18:1
Max power 780 kW @ 1500 rpm

Weight:

Approx. 3500 kg

Gearbox:

- Hybrid gearbox gives different running modes
- Compact design
- Large economical reduction ratio
- Option of PTO/PTI with individual hydraulic clutches
- Rigid cast iron housing
- Helical ground gearwheels in casehardened and highly alloyed steel
- Hydraulic multi-plate clutch
- Oil system with direct driven oil pump, cooler, filter, valves etc.
- Pressure lubricated spherical roller bearings
- Designed according to the rules of the classification societies
- Each gearbox is tested and approved in test bed

Variants:

50HS with built-in servo system for CP propeller
50HS with intermediate shaft for counter rotating
50OD prepared for OD system