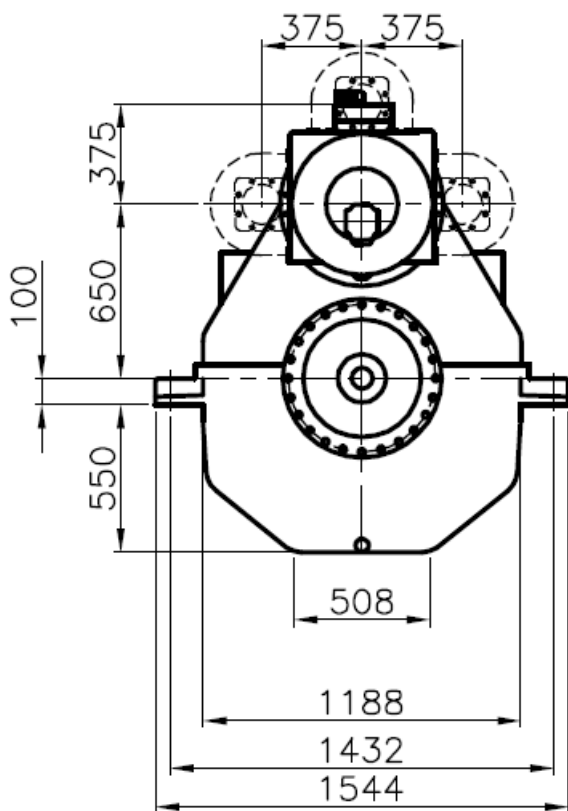
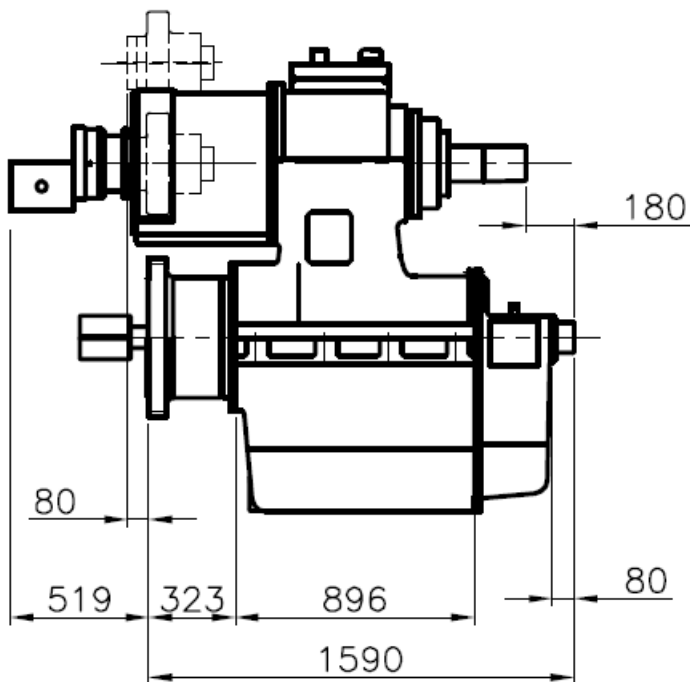


# 650HS - MARINE GEARBOX



Assembly Type 650HS

Reduction ratio	PF kW/rpm	Input shaft mm
2,03-2,58-3,04-3,55:1	4,580	140
4,05:1	4,185	130
4,53:1	3,631	130
5,05:1	3,067	130
5,44:1	2,836	130
6,06:1	2,303	110
6,47:1	1,990	110

## Servo for CP Propeller:

Max force = 730 kN

Max stroke = 190 mm

## PTO/PTI:

PTO with SAE D-flange and 13 tooth 1 3/4" involute inside spline

Other SAE and ISO flanges and splines available

Free shaft end also available

Max torque from PTO: 2000 Nm

Max torque from PTO/PTI: 4700 Nm

## Weight:

Approx. 5500 kg

## Gearbox:

- Built-in servo system for CP propeller
- Compact design
- Large economical reduction ratio
- Option of 1, 2 or 3 PTOs each with own hydraulic clutch
- Rigid cast iron housing
- Helical ground gearwheels in casehardened and highly alloyed steel
- Hydraulic multi-plate clutch
- Oil system with direct driven oil pump, cooler, filter, valves etc.
- Pressure lubricated spherical roller bearings
- Designed according to the rules of the classification societies
- Each gearbox is tested and approved in test bed

## Variants:

- 650OD prepared for OD systemt