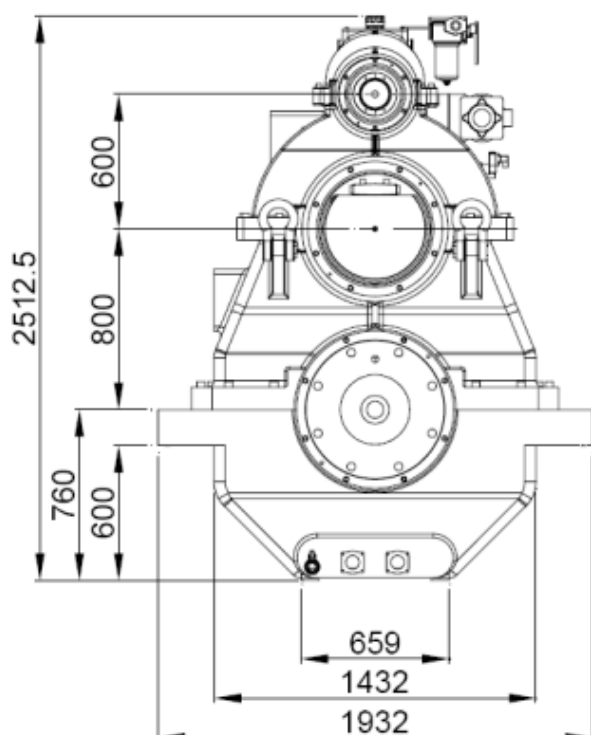
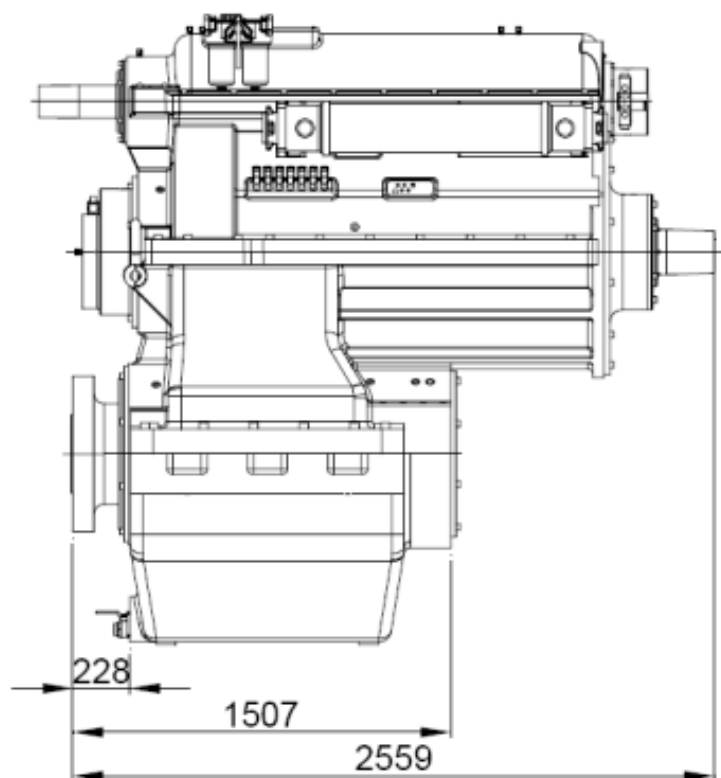


# 800D - MARINE GEARBOX



Assembly Type 800D PTO/PTI

Reduction Ratio	Power Factor kW/RPM	Input Shaft Diameter mm
2,95-3,58:1	9,90	180
4,16:1	8,80	180
4,33:1	7,60	180
4,95:1	7,00	180
5,59:1	5,80	180
6,15:1	4,50	180

## Servo for CP Propeller:

Max force = 1500 kN

Max stroke = 175 mm

## PTO/PTI:

PTO/PTI with free shaft

PTO ratios:

PTI ratios:

Max power PTO 540 kW @ 1200 rpm

Max power PTI 1068 kW @ 1200 rpm

## Weight:

Approx. 14300 kg

## Gearbox:

- Hybrid gearbox gives different running modes
- Prepared for OD system
- Compact design
- Large economical reduction ratio
- Option of PTO/PTI with individual hydraulic clutches
- Rigid cast iron housing
- Helical ground gearwheels in casehardened and highly alloyed steel
- Hydraulic multi-plate clutch
- Oil system with direct driven oil pump, cooler, filter, valves etc.
- Pressure lubricated spherical roller bearings
- Designed according to the rules of the classification societies
- Each gearbox is tested and approved in test bed

## Variants:

800D prepared for OD system